



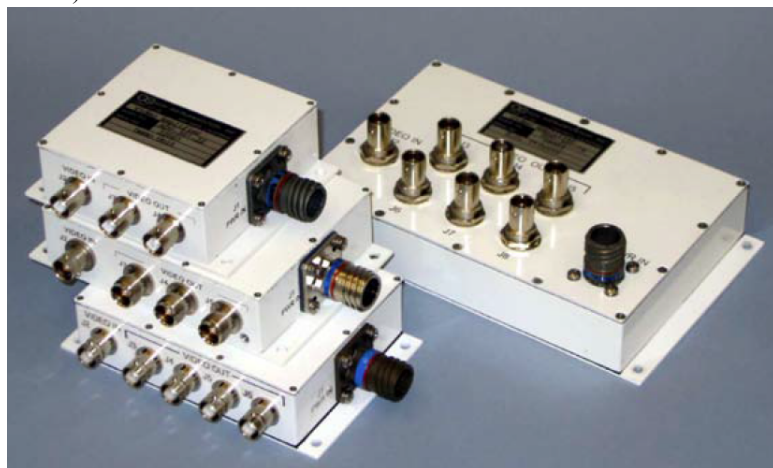
15531 Cabrito Road
Van Nuys, CA 91406

www.eoninstrumentation.com
818-781-2185

3800 Oceanic Drive, #112
Oceanside, CA 92056

Compact Product Series (10-12-2018)

Model Number	Part Number
ADV-301-22	12981-300
ADV-301-22-1	18300-300
ADV-301-22-2	19000-300
ADV-301-22-3	19600-300
ADV-301-23	12980-300
ADV-301-23-1	16500-300
ADV-301-24	13500-300
ADV-301-16	12940-300



General

ADV-301-22, ADV-301-23, ADV-301-24, and ADV-301-16 Pictured

The ADV-301-Compact Series has a variety of Video Amp/Splitters. The system is operated with nominal 28 VDC input power. Input and output impedance is 75 ohms for the basic series. All independent outputs are unity gain from video in. Different input and output impedances are available upon request, and can be integral with chassis ground as well as different fixed gains from video in. Eon also manufactures units with individual user adjustable gain for each output.

Configuration

See the attached Outline and Mounting Drawings for the Standard Series with connector types shown on the last Summary page. Video connectors can be any combination of BNC or TNC, single ended or differential, top or side mounted, uncapped or capped with tethers.

Specifications:

Signal Input/Output: Single-ended or Differential

Gain: Unity

Finish: (except for screws, base and connectors): Gold Chromate with black silkscreen

Input Voltage: 18-36 VDC

Power Consumption: 1.5 - 2.5 Watts depending on configuration

Input Impedance: 75 Ohm Standard (Other impedances available. Specify when ordering)

Input Signal Amplitude: 0.5 to 5.0V peak-to-peak

Input Overload: 10V peak-to-peak

Phase Characteristics: Non-Inverting

Output Signal Amplitude: Single ended outputs 0.5V to 3.0V peak-to-peak

Bandwidth: Flat within ± 0.4 dB from 30Hz to 30.0MHz at 1V peak-to-peak output, gain = 1

Noise: 0.01 peak-to-peak at 1V peak-to-peak output, gain = 1

Harmonic Distortion: Less than 2.5% at 1V peak-to-peak output, gain = 1

Current: Less than 100 milliamps
Ripple: Less than 1.5V peak-to-peak
Reverse Polarity Protection: Provided
50 VDC Transient @ 100mSec
Weight: 0.6-1.5 lbs (nominal)

Qualification (Data available upon request):

Power: Mil-Std-704D, 1275

Environmental: Mil-Std-810G

Temperature:

Storage: -55° to +85°C

Functional: -40° to +71°C

Short Time Operating: +85°C

Altitude: Non-Pressurized Area, Cl 1 per MIL-E-5400T (0-50,000Ft)

Humidity: DO-160C, Cat A

MIL-STD-810E Method 507.3, Procedure III (Aggravated), 10ea 24 hr cycles

Salt Fog: MIL-STD-810E Method 509.3, Procedure I

Sand and Dust: MIL-STD-810E Method 510.3, Procedure I

Acceleration: Operational: +/-6.5G's, Non-operational: +/-9 G's

Endurance Sine on Random Vibration:

MIL-STD-810F Method 514.5 Category 13 and IF-3AA0-08002B.

Rapid Decompression: MIL-STD-810E Method 500.3 para II-3.3 Procedure III

Functional and Crash Safety Shock Testing:

DO-160C Section 7 Impulse, 6 G's Operational, 15 G's Crash Safety.

EMI: Mil-Std-461

Conducted Emissions, CE101

Conducted Emissions, CE102

Radiated Emissions, RE101

Radiated Emissions, RE102

Conducted Susceptibility, CS101

Conducted Susceptibility, CS114

RF Conducted Susceptibility, RFCS

Radiated Susceptibility, RS103

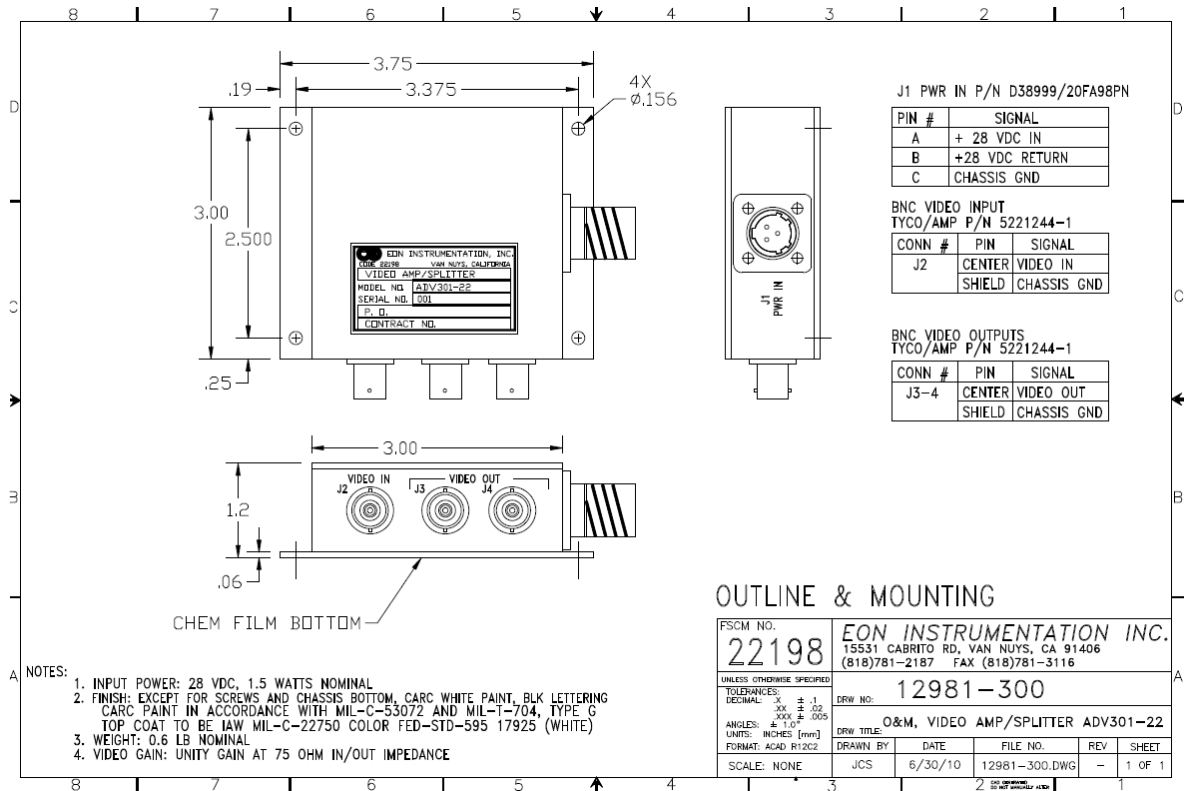
RF Radiated Susceptibility

Electrostatic Discharge, ESD

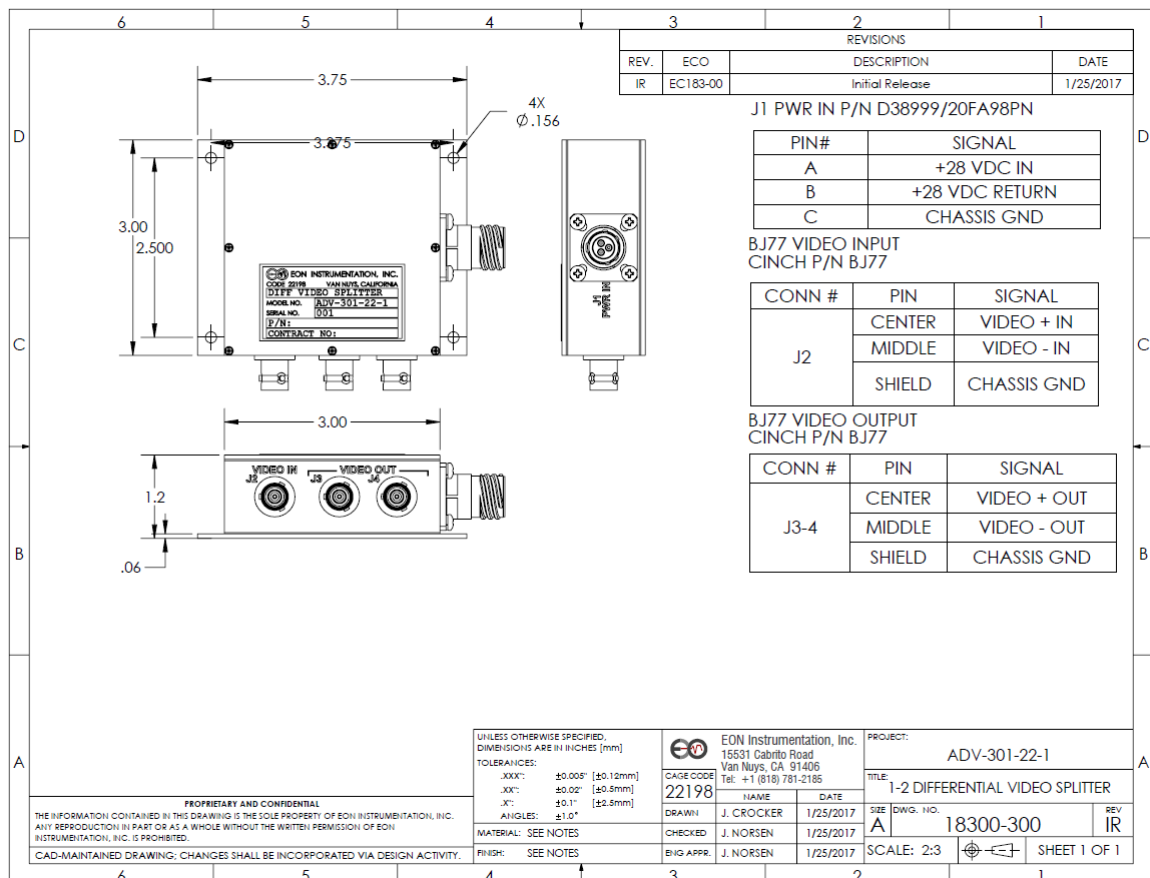
Lightning Induced Transient Susceptibility, LITS

MTBF: 82,000 – 96,000Hrs

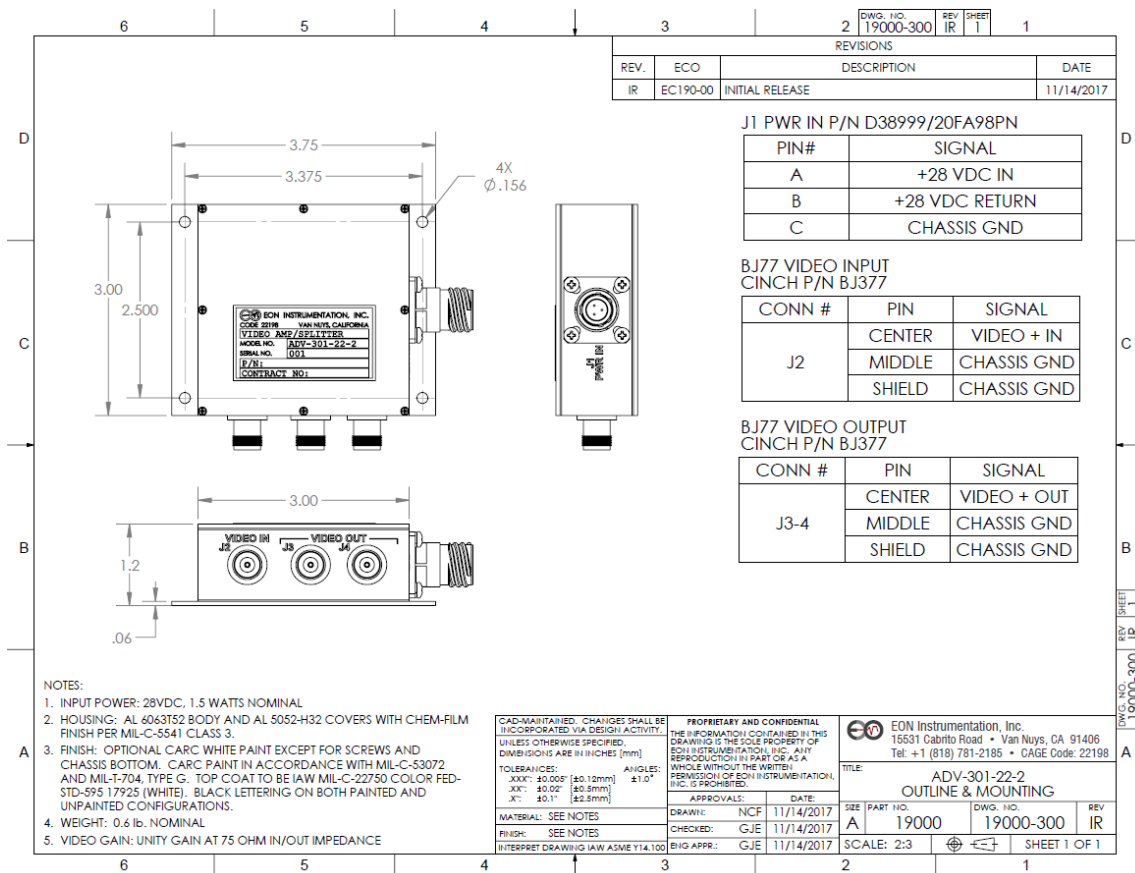
Outline and Mounting Drawings:



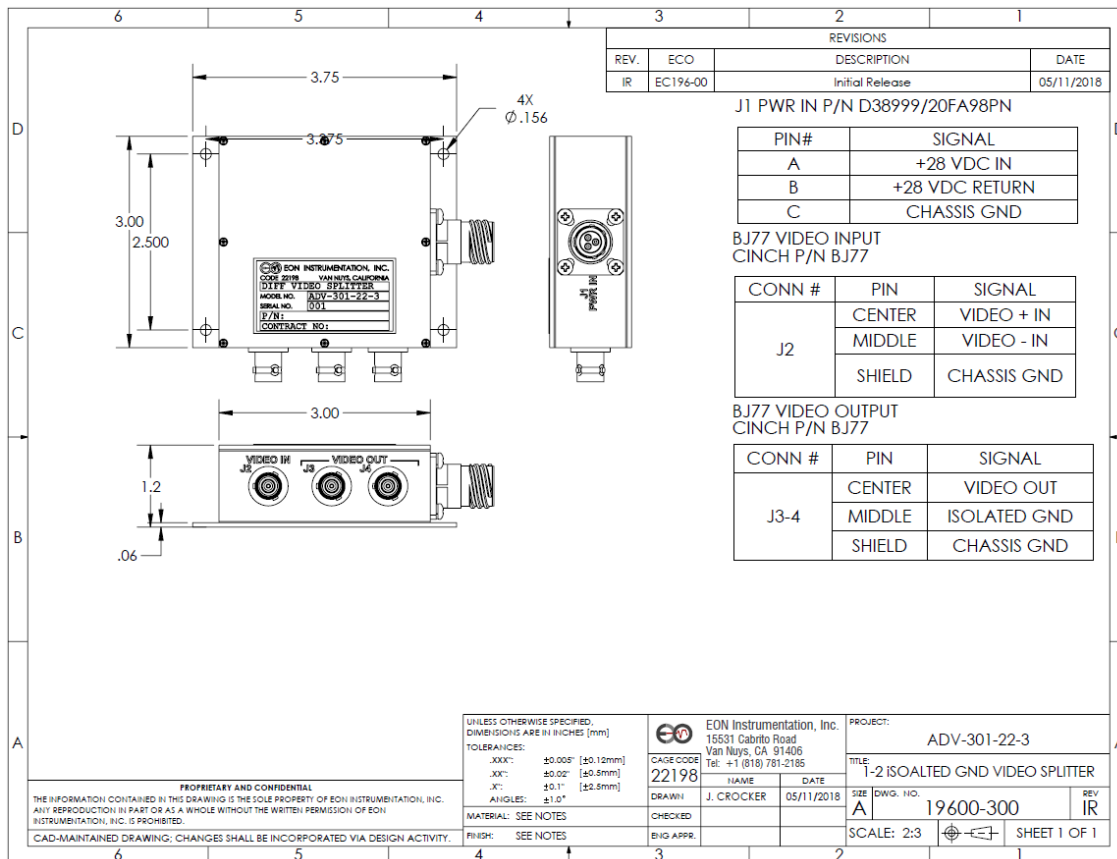
ADV-301-22 Outline and Mounting Drawing



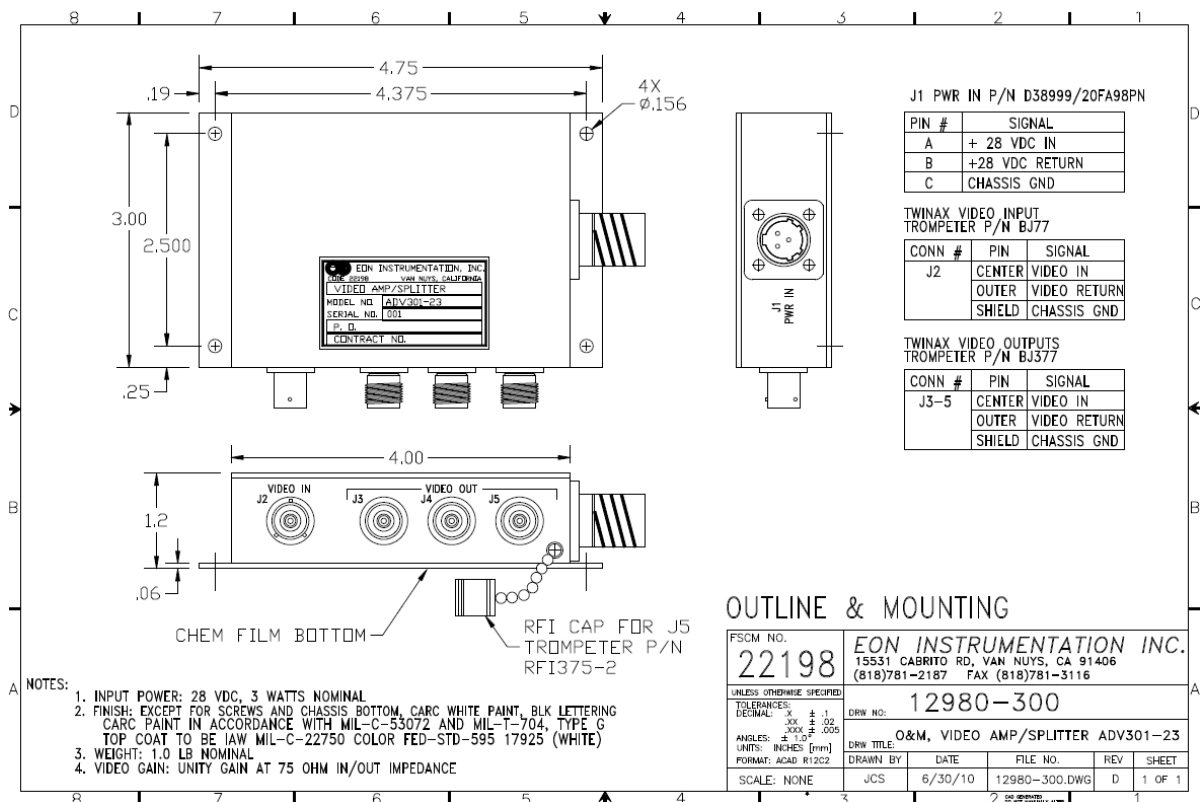
ADV-301-22-1 Outline and Mounting Drawing



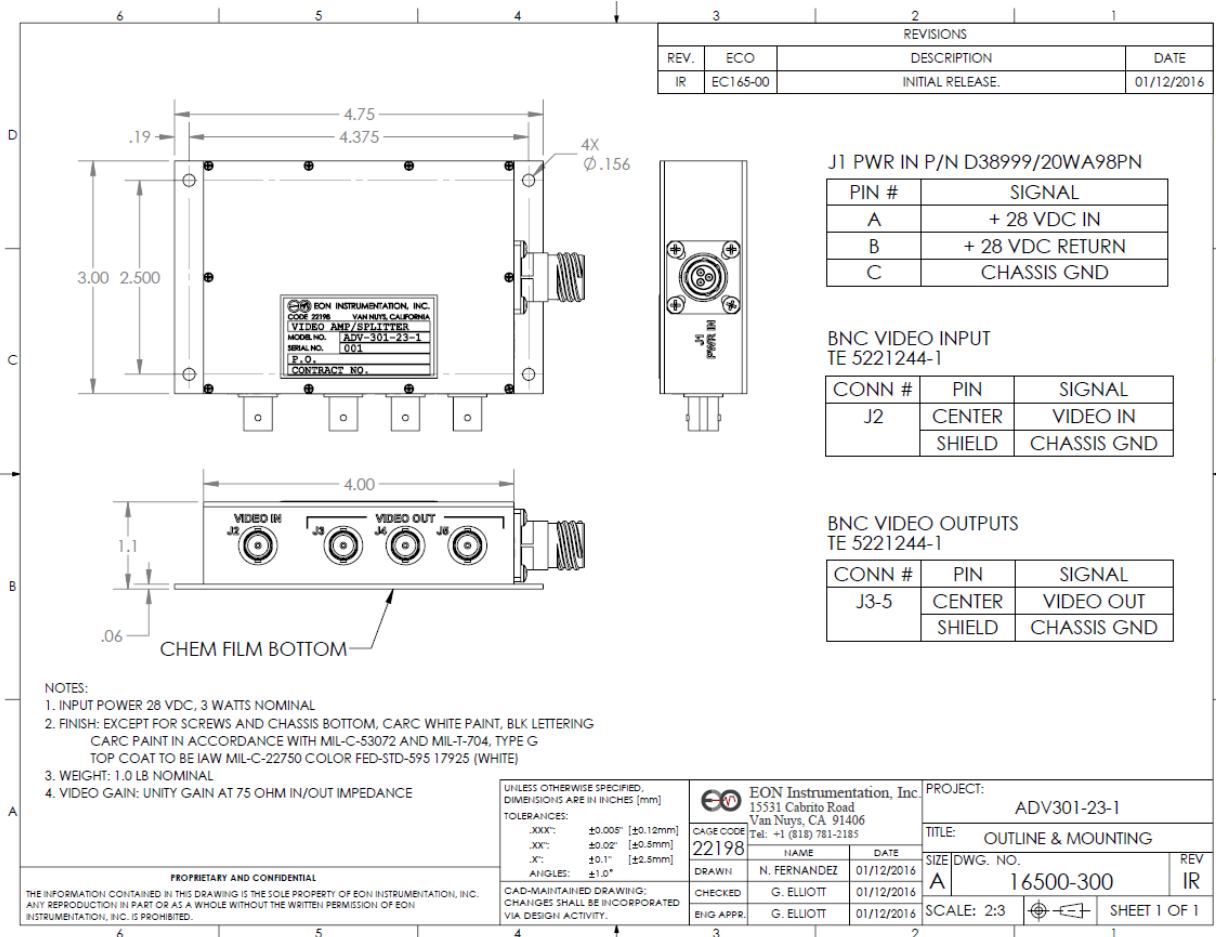
ADV-301-22-2 Outline and Mounting Drawing



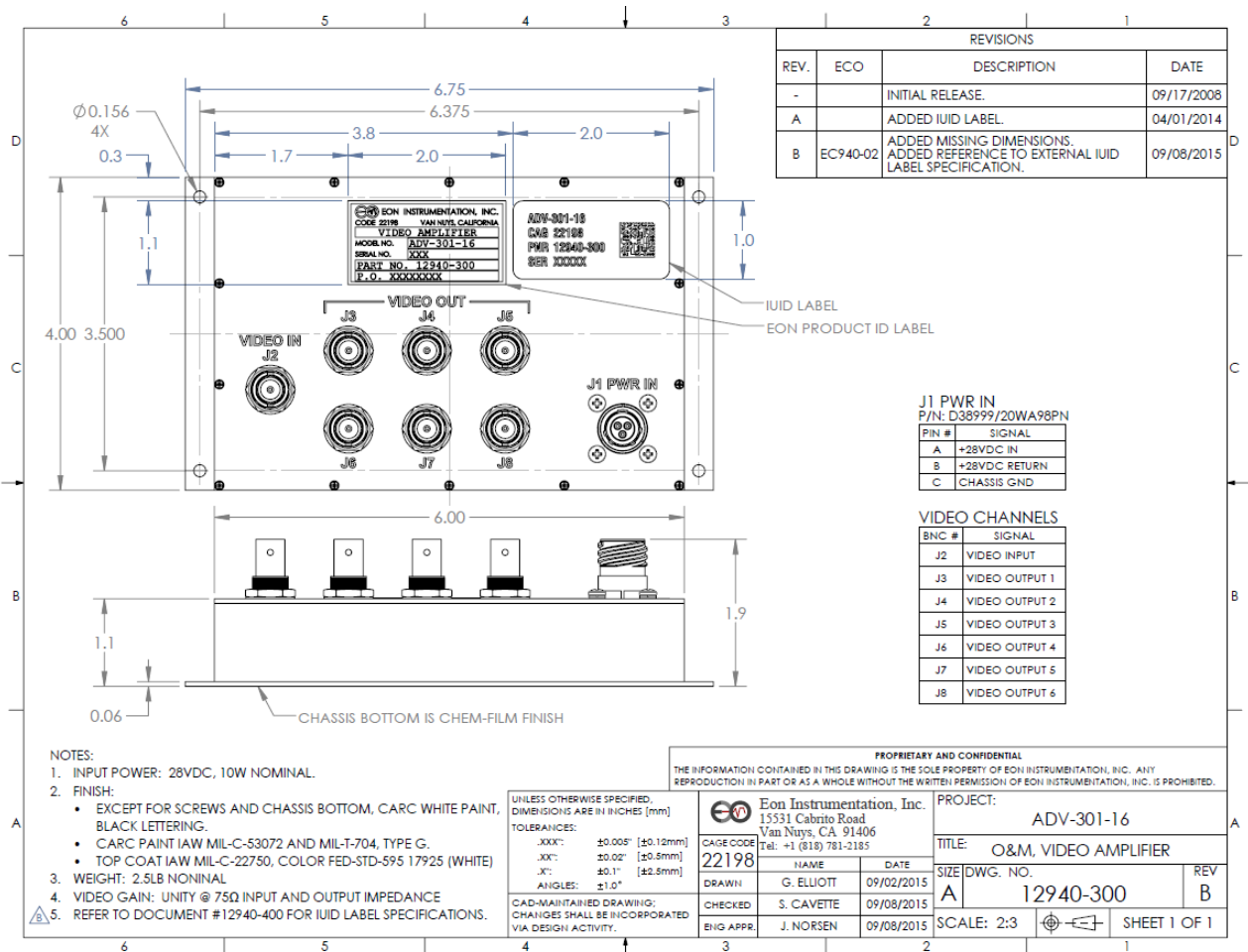
ADV-301-22-3 Outline and Mounting Drawing



ADV-301-23 Outline and Mounting Drawing



ADV-301-23-1 Outline and Mounting Drawing



ADV-301-16 Outline and Mounting Drawing