

# ADV-301-22AS Video Distribution Amplifier Unit Eon P/N 21200-300

## Technical Manual

EON Doc # 21200-865  
(Rev IR – 09/18/19)

All pages in this document and any attachments thereto are considered Proprietary Information to and of  
Eon Instrumentation, Inc.

Prepared By: *Brian Fitzpatrick*  
Brian Fitzpatrick, Assoc Engineer  
Proj Eng

Approved By: *James Winchester*  
James Winchester, President  
Prog Mgr



15531 Cabrito Road  
Van Nuys, CA 91406

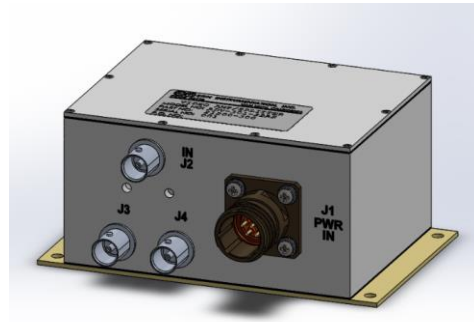
[www.eoninstrumentation.com](http://www.eoninstrumentation.com)  
ISO9001:2015/AS9100D  
818-781-2185

3800 Oceanic Drive, #112  
Oceanside, CA 92056

# Video Distribution Amplifier Unit

Model Number:  
ADV-301-22AS

P/N:  
21200-300



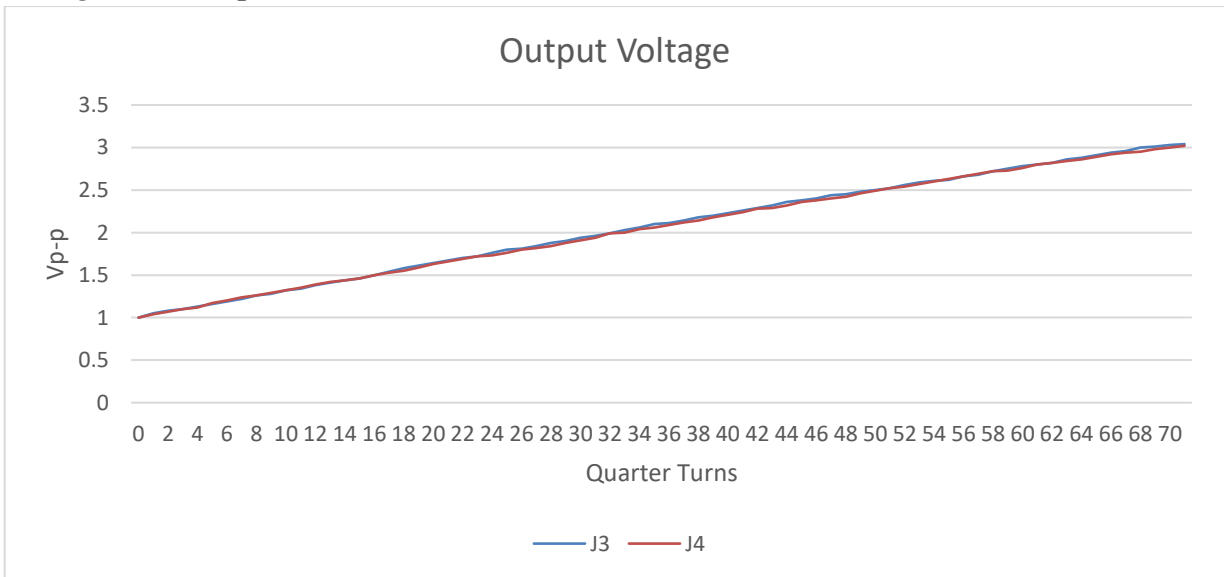
## General:

The Brick Product Series Video Amplifier is a broadband amplifier with flat frequency response from 30 Hz to 30.0 MHz. This Video Amplifier was originally designed for missile applications and is now used extensively in fighter, helicopter, UAV, fixed wing aircraft and military ground vehicle applications. The Brick Series has separate adjustable gain controls for each output.

## ADV-301-22AS Operational Overview:

**1.1** The ADV-301-22AS (Video Distribution Amplifier Unit) is designed with 1 single-ended input, and 2 single-ended outputs. It is powered by 28 VDC, and provides adjustable voltage gain up to a maximum of 3V peak-to-peak. Voltage gain for each output can be adjusted using a small flat head screwdriver, turning the potentiometer dials located in the holes above their corresponding outputs (J3, J4). Turn clockwise to increase gain.

## Voltage Gain Graph:



ADV-301-22AS Voltage Gain, 1V Peak to Peak Input

**1.2** One BNC connector (J2) inputs a composite signal. Two BNC connectors (J3, J4) output composite signals.

**1.3** The ADV-301-22AS provides constant output from the J3 connector. Output from the J4 connector can be enabled/disabled via external switch connected to pin F of the J1 power connector. Applying +28 VDC to pin F will enable video output.

**Applicable Documents:**

Eon Doc# 21200-300(attached) Outline and Mounting Drawing, ADV-301-22AS P/N 21200-300

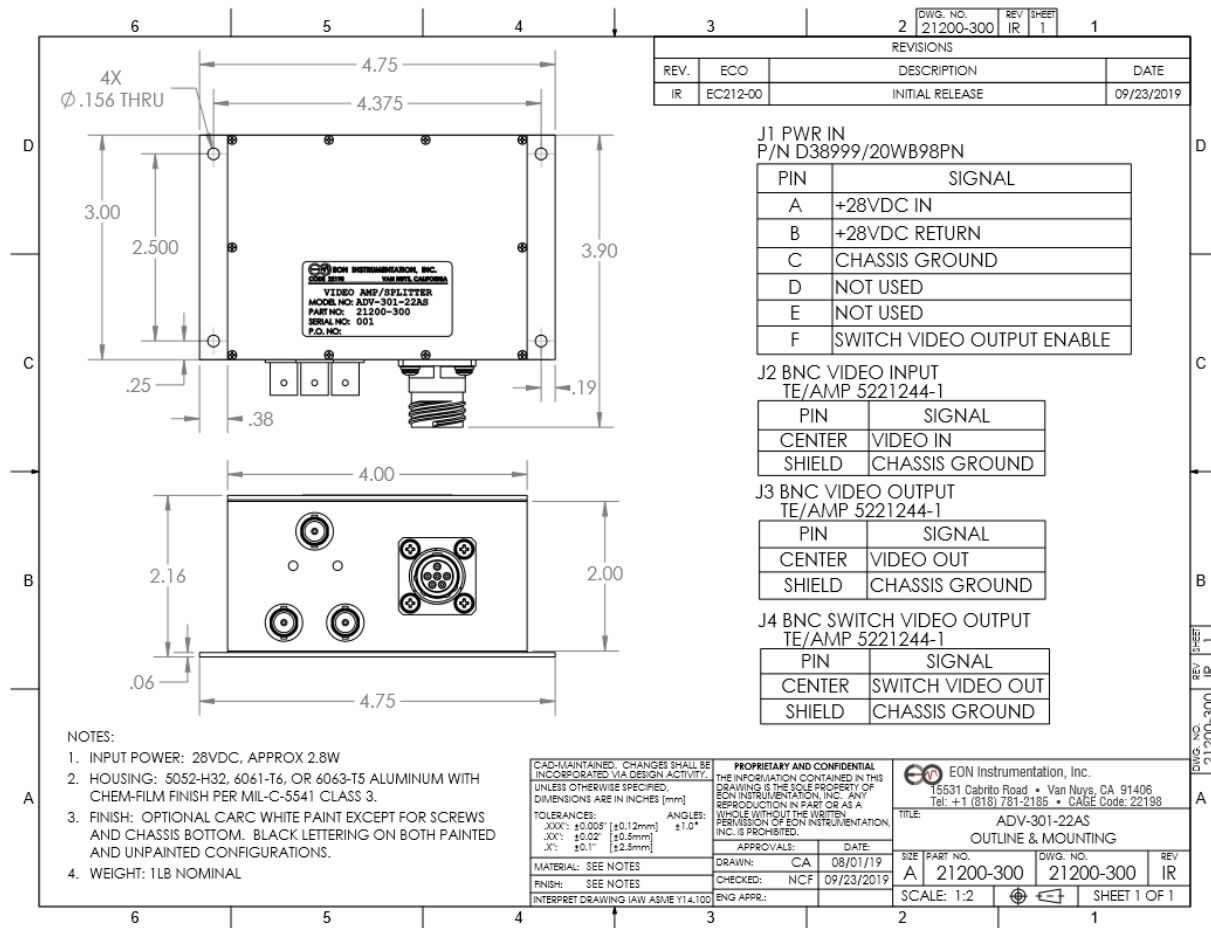
**ADV-301-22AS Architecture;**

The ADV-301-22AS contains two subassemblies – Power Board and Splitter/Amplifier Board.

**Configuration:**

See the attached Outline and Mounting Drawings.

**Outline and Mounting Drawing:**



Power mating connector: 26WB98SN

Signal mating connector: Std BNC